

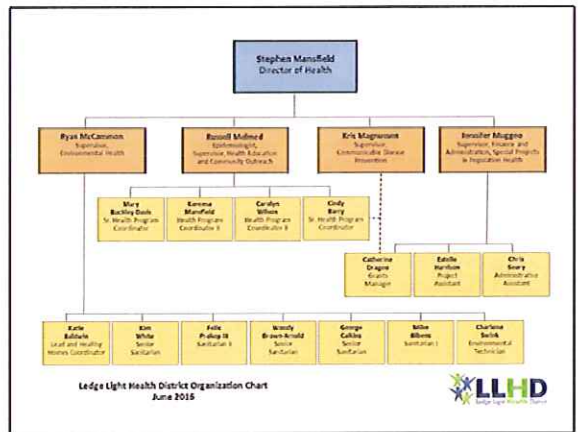
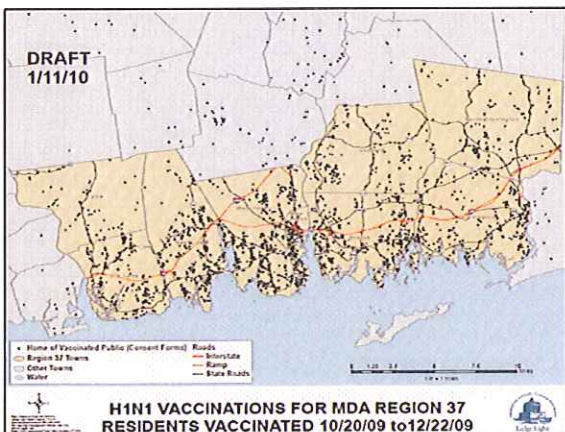
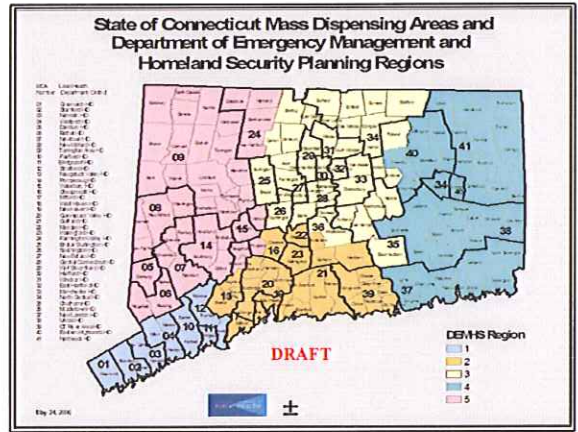
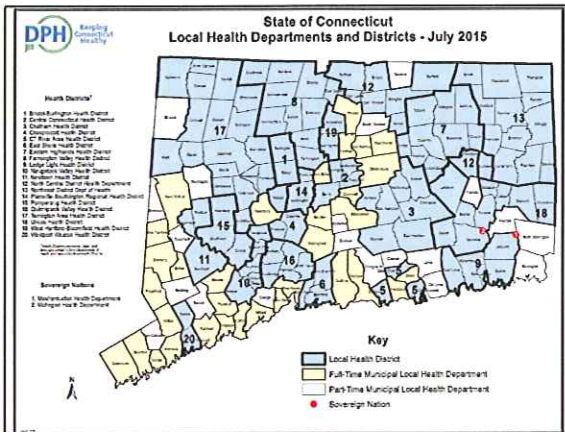


Promoting healthy communities

Stephen Mansfield REHS, MPH
Director of Health

Public Health

- ▶ The system and efforts of government, social and private organizations that focus on protecting, promoting and restoring the health of a society.
- ▶ The public health system strives to keep communities healthy by preventing disease, illness and injury.



Connecticut General Statutes 19a-240 to 246

- Affairs of District managed by a Board of Directors
- Instrumentalities of their constituent municipalities
- May promulgate regulations to protect the public health
- Existing full-time municipal employees offered District employment
- Receive State per capita contribution – \$1.85
- Municipality must remain in District for 24 months

Sec. 19a-207a. Basic health program.

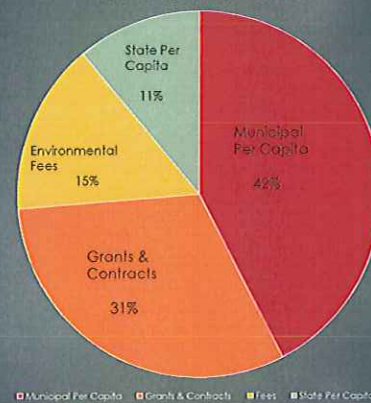
Each district department of health and municipal health department shall ensure the provision of a basic health program that includes, but is not limited to, the following services for each community served by the district department of health and municipal health department:

- (1) Monitoring of health status to identify and solve community health problems;
- (2) Investigating and diagnosing health problems and health hazards in the community;
- (3) Informing, educating and empowering persons in the community concerning health issues;
- (4) Mobilizing community partnerships and action to identify and solve health problems for persons in the community;
- (5) Developing policies and plans that support individual and community health efforts;
- (6) Enforcing laws and regulations that protect health and ensure safety;
- (7) Connecting persons in the community to needed health care services when appropriate;
- (8) Assuring a competent public health and personal care workforce;
- (9) Evaluating effectiveness, accessibility and quality of personal and population-based health services; and
- (10) Researching to find innovative solutions to health problems.

Benefits of Joining Ledge Light Health District

- ▶ Significant cost savings for the Town of Old Lyme
- ▶ Consistent enforcement of codes, statutes and regulations
- ▶ The ability to provide the full range of public health functions to all residents
- ▶ Fully trained and certified staff
- ▶ 24/7 coverage
- ▶ The ability to address concerns across town lines

LLHD FY '15 Revenue Sources



Thank you!

Stephen Mansfield, RS, MPH
Director of Health, Ledge Light Health District
860-448-4882 ext. 307
860-867-7962 (mobile)
smansfield@llhd.org
www.llhd.org